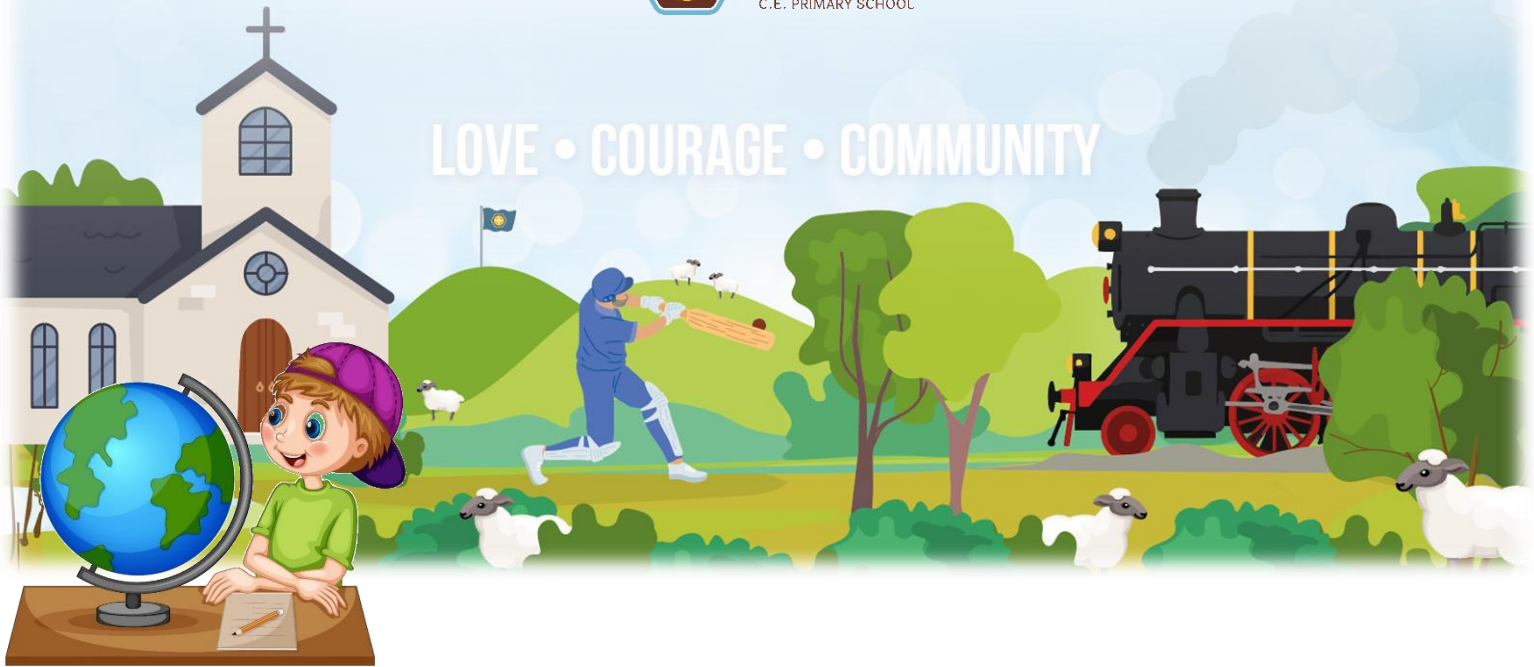


LOVE • COURAGE • COMMUNITY



# Geography Journey at Ropley Church of England Primary School



Support children through investigation and exploration to see themselves as Geographers



Inspire in children a curiosity and fascination about the world and people within it



Help children to understand what makes our local area unique and special

Equip children to be confident using a variety of maps

## **EYFS**

### **Sticky Knowledge**

- Know I live in the United Kingdom, near or in Ropley and attend Ropley Church of England Primary School
- Know how to look at maps and globes and know which parts are land and which are water
- Know the different seasons
- To know the route from home to school
- Know some of the main sights and attractions within the world
- Understand some of the cultures of children within my class

### **Ropley Words**

Up, Down, Left, Right, Near, Far, Bigger/smaller, Like/dislike, Similar/different, World, Country, Town, House, School, Globe, Map, Weather, Seasons, Transport

# Year 1



What is special about our school?

What makes Church Street special?

My local park is perfect all year round

Ropley within the UK

## Objectives

- Be able to locate streets on a map
- Be able to draw simple maps using symbols
- Know how our school is the same as other schools
- Know how our school is different to other schools
- Be able to locate Church Street on a map
- Know what is on Church Street and compare this to other streets
- Be able to draw a map of Church Street with a key
- Know Church Street is a street in Ropley
- Be able to locate local parks on a map
- Know how to get from school to St. Peter's Church and give directions to help
- Know about the different seasons and the weather

## Sticky Knowledge

- Know which is N, E, S and W on a compass
- Know Ropley CE Primary School is located on Church Street
- Be able to point out Ropley CE Primary School on an aerial map
- Know what makes Ropley CE Primary School the same as other schools
- Know what makes Ropley CE Primary School different to other schools
- Know which is the hottest and coldest season in the UK
- Know and recognise main weather symbols
- Know their home address, including an understanding of postcodes
- Know what is found on a typical street
- Explain why Church Street is different to neighbouring streets
- Know the main differences between city, town and village
- Know some of the different physical and human features in Ropley

## Ropley Words

Autumn	Up, Down, Left, Right, Near, Far, North, East, South, West, Bigger/smaller, Like/dislike, Similar/different, Country, Town, Local, Street, House, Map, Weather, Seasons, Crops, Temperature
Spring	Estate, Artists, Community, Alleyway, Lamppost, Underpass, Crossing
Summer	Canal, Dual carriageway

## Year 2



What is special about our school?

What makes Church Street special?

My local park is perfect all year round

Ropley within the UK



Everywhere in the World is hot

Is Kota Kinabalu very different to Basingstoke?

Are all beaches the same?

### Objectives

- Know the 7 continents
- Know where in the world Antarctica is located
- Know the hot and cold areas of the world
- Know what it is like in Antarctica
- Know the main oceans
- Know what it is like in Kota Kinabalu
- Know where in the world Asia is located and where in Asia Kota Kinabalu is
- Know the difference in climate between Kota Kinabalu and Basingstoke
- Know some similarities and differences between Kota Kinabalu and Basingstoke
- Know a range of beaches in Hampshire
- Know the human and physical features surrounding a beach
- Be able to compare different beaches
- Describe what the beach and coast are like

### Sticky Knowledge

- Know the names of the four countries that make up the UK and name the three main seas that surround the UK
- Know where the equator, North Pole and South Pole are on a globe
- Know features of hot and cold places in the world
- Know the names of and locate the seven continents of the world
- Know the names of and locate the five oceans of the world
- Know the name of and locate the four capital cities of England, Wales, Scotland and Northern Ireland
- Know the difference between human and physical features
- Be able to identify several seaside resorts on a map
- Be able to explain some of the advantages and disadvantages of living near the seaside
- Know what is usually found at a traditional British seaside
- Identify the following physical features: mountain; lake; island; valley; river; cliff; forest and beach
- Know some of the main differences between England and Brazil
- Know what is meant by a tropical rainforest
- Know where the main part of the Amazon rainforest can be found
- Know some of the layers within the rainforest

### Ropley Words

Autumn	Man-made, Natural, Continent, World
Spring	Human, Physical, Resort, Mountain, Lake, Valley, Cliff
Summer	Tropical, Temperate, Rainforest, Deforestation, Species, Forest floor, Canopy layer, Emergent layer

# Year 3



What is special about our school?



What makes Church Street special?



My local park is perfect all year round



Ropley within the UK



Everywhere in the World is hot



Is Kota Kinabalu very different to Basingstoke?



Are all beaches the same?



Are all volcanoes the same?



What is unique about chocolate?



Are villages the same around the world?

## Objectives

- Know and describe how a volcano is formed
- Understand what a volcano is and where they are located throughout the world
- Understand the positives and potential pitfalls of living near a volcano
- Understand the impact of volcanic eruptions
- Know where in the world Africa is and what it is like
- Know where in Africa the Ivory Coast is located and what it is like
- Know where Cocoa is grown and who grows it
- Know similarities and differences between the Ivory Coast and the UK
- Locate Chawton and understand what it is like
- Identify human and physical features in Chawton
- Know what makes a village
- Know how to read 4-figure grid references
- Know what makes a village

## Sticky Knowledge

- Know what a volcano is and the impact of an eruption
- Know how a standard volcano is formed
- Know and be able to label the different parts of a volcano
- Be able to talk about real-life volcanoes
- Be able to locate some volcanoes on a world map
- Know a range of countries within Europe
- Explain some of the advantages and disadvantages of living near a volcano
- Explain the advantages/disadvantages to living in both a village and a town
- Explain distinct differences between a town and a village
- Know the difference between a hamlet and a village

## Ropley Words

Autumn	Volcano, Magma, Lava, Magma chamber, Crater, Ash cloud, Active volcano, Dormant, Eruption, Ring of fire, Extinct, Pyroclastic flow
Spring	Hamlet, Cocoa, Exporter, Importer, Concentrated, Transported
Summer	Hamlet, Village, Land use, Local, Residential, Settlement, Industrial, Rural

## Year 4



What is special about our school?



What makes Church Street special?



My local park is perfect all year round



Ropley within the UK



Everywhere in the World is hot



Is Kota Kinabalu very different to Basingstoke?



Are all beaches the same?



Are all volcanoes the same?



What is unique about chocolate?



Are villages the same around the world?



Is LaPlagne really so different to Basingstoke?



Which biome is the easiest to live in?



Are all rivers the same?

### Objectives

- Know the names of, and locate, a variety of European countries
- Know how to plan a journey from Basingstoke to France using maps
- Know the capital city of France
- Be able to locate La Plagne on a map
- Know the 8 points of a compass and use these when describing locations
- Know key similarities and differences between Basingstoke and La Plagne
- Know where in the world South America is located and describe what it is like
- Know where Peru is located in South America is located and describe what it is like
- Know what is meant by a biome
- Know which biome covers most of Peru
- Explore different biomes including how people survive in different areas
- Know and locate some rivers which flow through Hampshire
- Know the features of a river
- Know the difference between a river and a canal
- Understand the river process

## Sticky Knowledge

- Know the names of, and locate, at least eight European countries
- Use maps to locate European countries and capitals
- Know the names of, and locate, at least eight counties and at least six cities in England
- Know the names of four countries from the southern and four from the northern hemisphere
- Know how to plan a journey within the UK, using a road map
- Know how to plan a journey from Basingstoke to France using a variety of maps
- Know the capital city of France
- Be able to locate English Channel, Atlantic Ocean and Bay of Biscay on a map
- Know how to find places using 4 figure grid referencing
- Know the 8 points of a compass and use these when describing locations
- Know and recognise some OS symbols
- Know where La Plagne is and locate it on a map
- Know the climate of France and its effect on life and trade
- Know and label the main features of a river
- Know why most cities are located by a river
- Know the name of, and locate, a number of the world's longest rivers
- Know the difference between a river and a canal
- Know and locate several local rivers and canals
- Know what is meant by biomes and be able to identify the features of a specific biome
- Know where the equator, Tropic of Cancer, Tropic of Capricorn and the Greenwich Meridian are on a world map
- Know and describe the water cycle

## Ropley Words

Autumn	Climate, Economy, Tourism, Industry
Spring	Biome, Northern hemisphere, Southern hemisphere, Longitude, Latitude
Summer	Precipitation, Condensation, Evaporation, Flow, Mouth, Delta, Source, Minerals, Biome, Vegetation, Distribution

## Year 5



What is special about our school?

What makes Church Street special?

My local park is perfect all year round

Ropley within the UK



Everywhere in the World is hot

Is Kota Kinabalu very different to Basingstoke?

Are all beaches the same?



Are all volcanoes the same?

What is unique about chocolate?

Are villages the same around the world?



Is LaPlagne really so different to Basingstoke?

Which biome is the easiest to live in?

Are all rivers the same?



Making Ropley Better



Is Southampton(or Portsmouth) a gateway to the world?

### Objectives

- Know some key areas within Hampshire and be able to make comparisons
- Be able to locate Southampton/ Portsmouth and describe what it is like
- Explore how Southampton/ Portsmouth is connected to the rest of the world
- Explore how transport links connect Southampton/ Portsmouth to the rest of the world

### Sticky Knowledge

- Know what most of the ordnance survey symbols stand for
- Know how to use six-figure grid references
- Know why are industrial areas and ports are important
- Know latitude and longitude
- Know how to use a scale to measure distances on maps
- Know some of the key areas which make up Hampshire and locate these on a map
- Know the transport links between Portsmouth and the rest of the world

### Ropley Words

Port, Economy, Supply, Industry, Leisure, Tourist
---

## Year 6



What is special about our school?

What makes Church Street special?

My local park is perfect all year round

Ropley within the UK



Everywhere in the World is hot

Is Kota Kinabalu very different to Basingstoke?

Are all beaches the same?



Are all volcanoes the same?

What is unique about chocolate?

Are villages the same around the world?



Is LaPlagne really so different to Basingstoke?

Which biome is the easiest to live in?

Are all rivers the same?



Making Ropley Better



Is Southampton(or Portsmouth) a gateway to the world?



Is Las Vegas so different to Winchester?

Do Mountains Move?

### Objectives

- Know where in the world North America is located and describe what it is like
- Know where in the world USA is located and describe what it is like
- Know where Nevada is located and describe what it is like
- Know the similarities and differences between Las Vegas and Winchester
- Know where in the world Asia is located and describe what it is like
- Know how to read 4 and 6 figure grid references
- Identify the positives and negative impacts of how mountains are used
- Know where Nepal is located and describe what it is like
- Know how mountains are formed
- Be able to explain how earthquakes have affected the people and the area of Nepal
- Evaluate the best methods to prepare for an earthquake

## Sticky Knowledge

- Know where the USA is located in the world and locate it on a map
- Know the USA is split into states and be able to name some of them
- Know Las Vegas is within the state of Nevada
- Know the climate and human/physical features of Las Vegas
- Be able to talk about the similarities and differences of Winchester to Las Vegas
- Know the names of a number of the world's highest mountains
- Know the names of, and locate, a number of South and North American countries
- Know how to use graphs to record features such as temperature or rainfall across the world
- Know the names of and locate some of the world's deserts
- Know where Nepal is located and locate it on a map
- Know the main human and physical differences between developed and third world countries
- Know and describe some countries and features within Asia
- Know what an earthquake is and the impact this can have

## Ropley Words

Spring	Gambling, Wealth, Poverty, Economic activity, Humidity,
Summer	Earthquake, Mountains, Altitude, Vegetation, Tectonic plates, Fold mountains, Tremors, Tsunami, Epicentre, Aftershock, Magnitude, Richter scale, Foreshock, Main shock, Seismic waves