

Welcome to Year 5 in the Hive



Meet the staff

Year group teacher
is Mrs Chattell



Also supporting in
Year 5 is Mrs Hill



Our learning is English and Maths
in the mornings

And a fortnightly Science afternoon

Science- this term

Autumn 1: Human Growth

Autumn 2: Materials and their properties



How does it work?

Morning- all arrive in normal Classes- Honeycomb or Beekeepers Register/ Early morning task/ Collective Worship

End of Worship - come to Hive

English / Break / Maths

Shared Reading

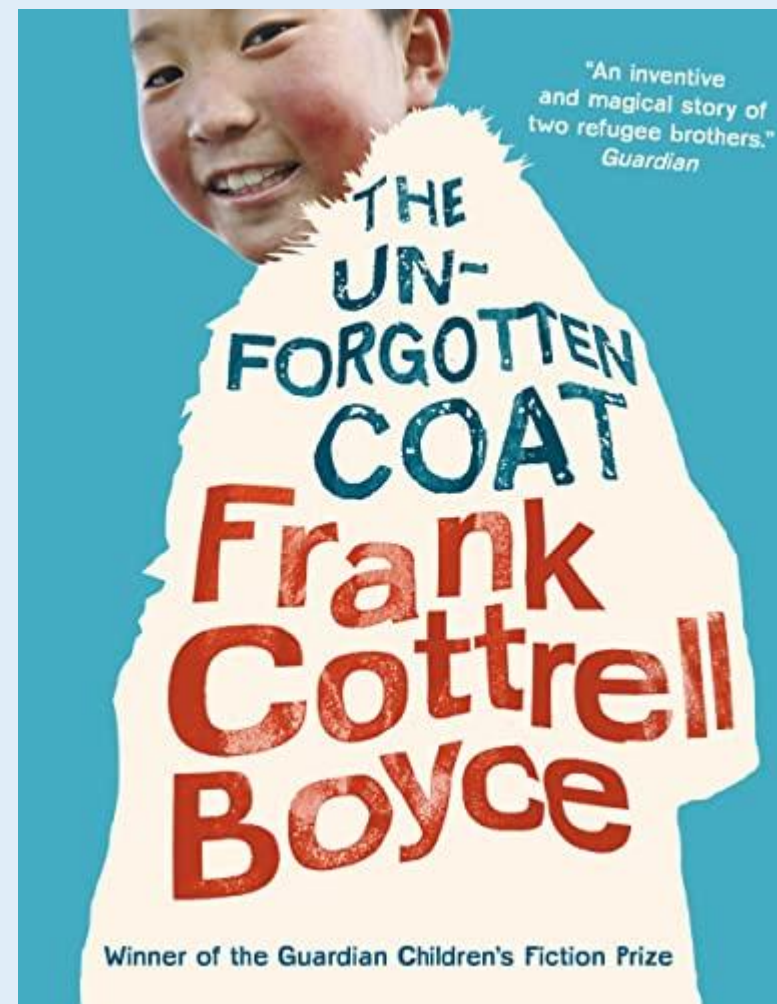
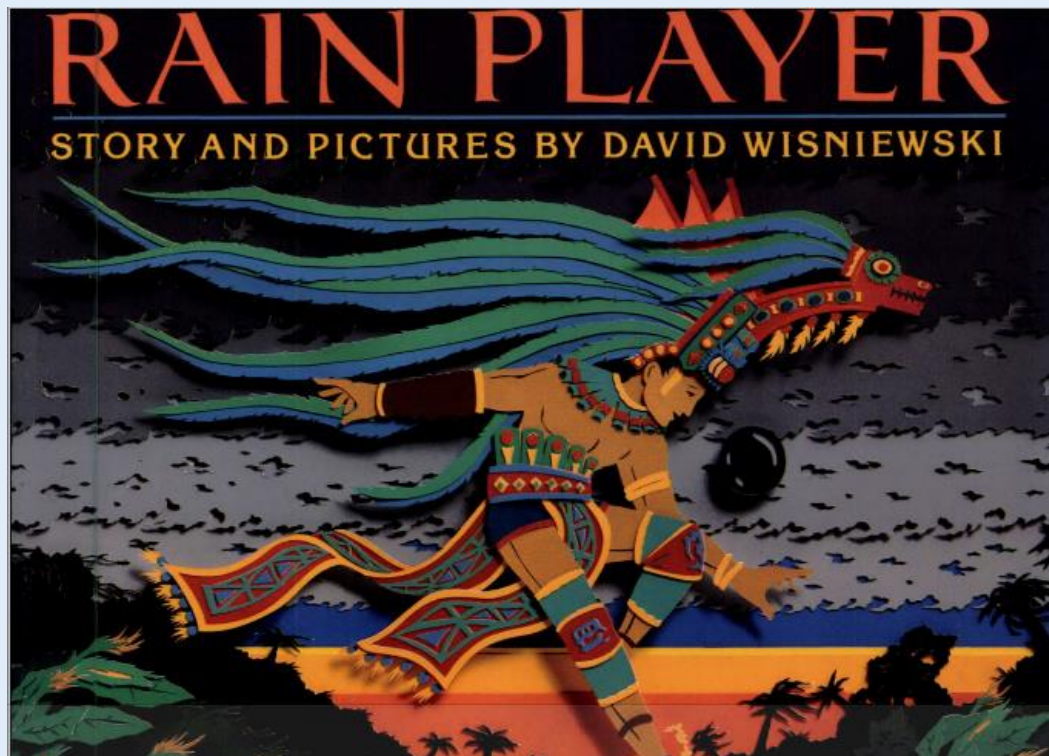
Lunch

Afternoons- after lunch break- return to their classes Honeycomb or Beekeepers for Foundation Subjects such as Art/ History/ Geography/ PE etc.

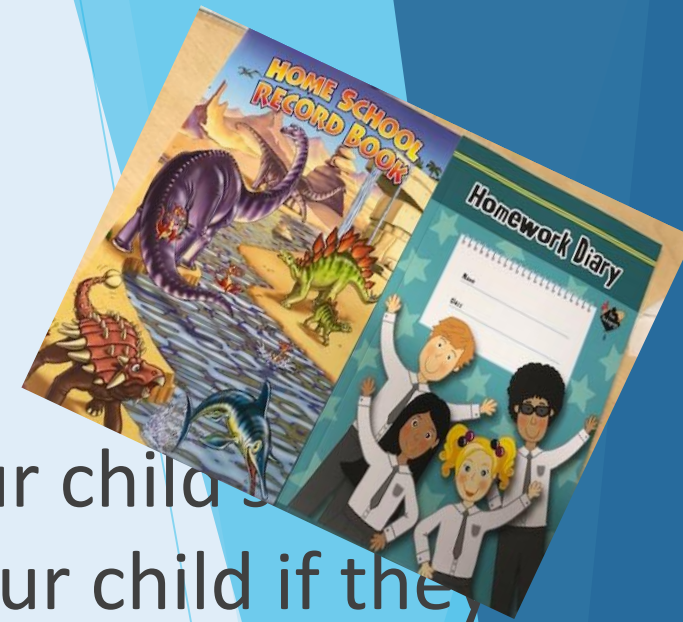


Week Commencing:	8:45 – 8:55	Worship 8:55 – 9:10	9:15 – 10:15	10:15 – 10:30	10:30 – 11:30	11:30 – 12:10	12.10 – 1:00	1:00 – 1:15	1:15– 2:15	2:15 – 3:15
Monday	Registration	Whole School Worship SV	English	Break	Maths	Shared reading	Lunch	With CT Maths Register	Y5 Science	Y5 Science
Tuesday		Whole School Worship Rev C	English		Maths	Shared Reading				
Wednesday		Whole school worship	English		Maths	SPAG				
Thursday		Own Class worship	English		Maths	Shared Reading				
Friday		Whole School Worship & Celebration								

Texts for the Autumn Term



Communication:

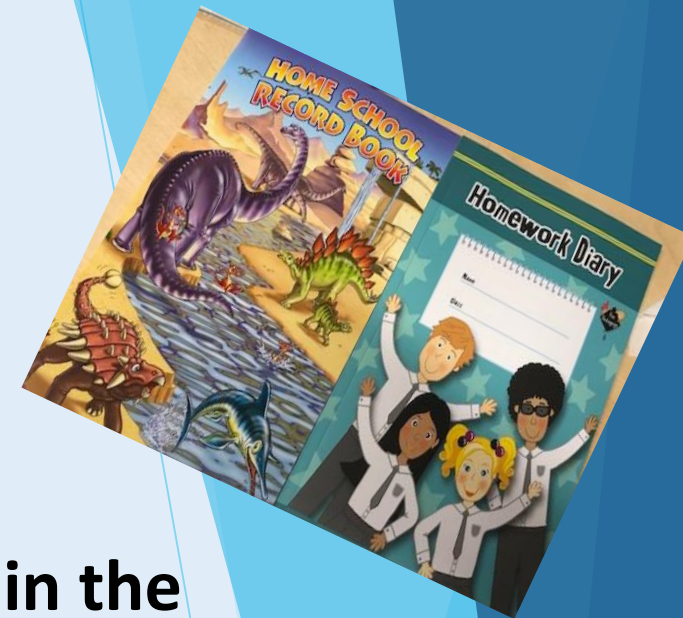


- ▶ Please use the Home School Record Book to record your child's reading at home. This can be done by an adult or by your child if they are reading independently.
- ▶ We collect these record books in weekly to see how much the children have been reading at home. We expect the children to read 5 times a week at home.
- ▶ If you have a brief message to pass onto the class/ year Group teaching team, you can do so in this book. Saves you writing a note/ lost. Children can show to me when arrive in the Hive.

Emails- when putting FAO -please add Mrs Chattell to class teachers

name adminoffice@ropleyschool.hants.sch.uk

Communication continued:



▶ Please avoid longer conversations with school staff first thing in the morning. It is important we are 'present' for the children at this vital time of the day.

▶ If you would like to meet to discuss a concern please call the or email the office to make an appointment. adminoffice@ropleyschool.hants.sch.uk

▶ Our office team may ask you what the appointment is regarding. This is so we can prepare for the meeting and make good use of time in the meeting.

▶ Parent evenings are held in the Autumn and Spring term.

▶ Communication route: Initially please arrange to meet with your child's teacher. If your concerns are ongoing and haven't been resolved then then you may wish to meet with a senior leader and then the head teacher.

Morning and after school routines

- ▶ School starts at **8:45am** and children are expected to be in school ready to learn by this time.
- ▶ The side gate opens at **8:35am** and children can arrive and enter the building from this time onwards.
- ▶ The gate closes at **8:45am**. If you arrive after this time you will need to go into school via the school office and will be asked why you are late.
- ▶ It is important for your child that they arrive on time. Learning starts promptly and arriving late can mean avoidable embarrassment as well as lost learning.
- ▶ Parents are asked not to enter the school building. This helps the children to become independent and start the day smoothly.
- ▶ School finishes at 3:15pm.
- ▶ Children attending 'The Hive' after school club will be registered outside in the circle area.



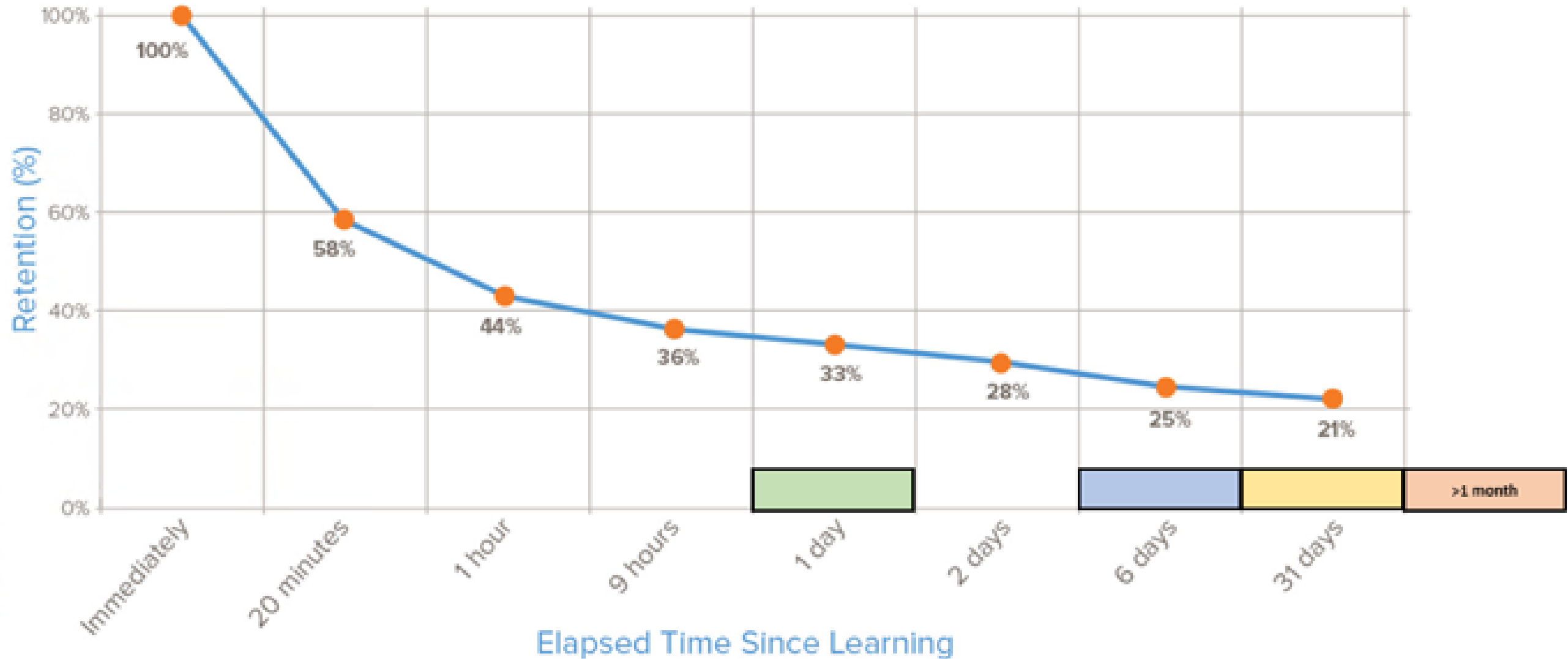
What your child will and will not need.

- ▶ School uniform with black shoes (no boots please).
- ▶ PE kit with trainers for outdoor PE. Tracksuits maybe worn in the colder months. We have optional house coloured hoodies as well.
- ▶ A water bottle. Best if it has a sports cap.
- ▶ All stationery will be provided by school so pencil cases are not necessary.
- ▶ A healthy snack if you would like them to have one. We ask that where possible this is a piece of fruit or veg. Not chocolate or biscuits.
- ▶ Due to several children with allergies it is essential that packed lunches and snacks **MUST NOT** contain nuts.
- ▶ Toys and games from home are not to be brought into school.
- ▶ All items must be named.

Homework?

- ▶ Spellings and Times Tables will be set and tested in Classes and done on a Friday – with their class teachers
- ▶ Homework is set on a Thursday and expected in the following Thursday. We will be set one piece of written homework a week on paper. This will alternate English and Maths and be related to lessons done recently.
- ▶ Children are also expected to read (x5), learn their spellings and times tables.

Ebbinghaus Forgetting curve



The Forgetting Curve with Reviews



Parent helpers

- ▶ We warmly welcome parent helpers into school.
- ▶ All of the classes will let the office team know what days and times they would like volunteers to come into school.
- ▶ This is likely to be for half hour or hour long slots either at the beginning or the end of the day.
- ▶ If you are able to volunteer please let the school office know and we will match you up with a class and time slot.
- ▶ We request that volunteers do not to volunteer in their own child's class for reading as it can be a distraction for your child.
- ▶ All volunteers will be requested to complete a DBS check and attend a briefing regarding their role. This will include a safeguarding element.



And finally...

- ▶ We are keen to work in partnership with you all as we know this will bring the best outcomes for the children.
- ▶ We have a wealth of experience across the school and look forward to a successful and positive year.
- ▶ Although we try to, we can not promise to always get everything right. (Nobody's perfect!)
- ▶ If you have any concerns or you feel we have made a mistake, please do come and let us know straight away and we will do our best address your concerns.
- ▶ What we don't know we can't fix!
- ▶ It's already been a brilliant start to the year in Year 5 , your children are xxxx, xxxxxx and xxxxxx.

